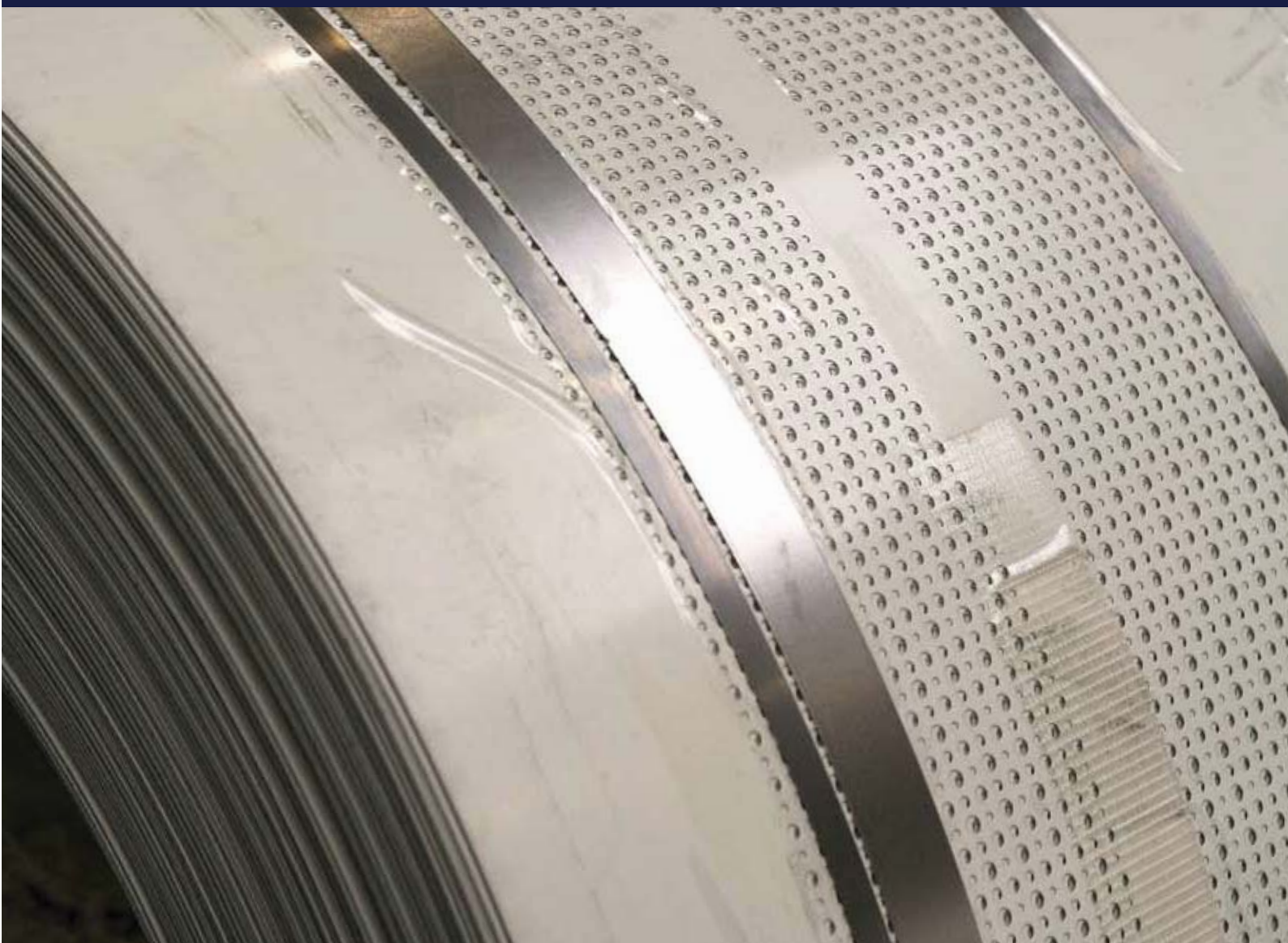


GATTI PRECORVI
L A M I E R E F O R A T E



FORI E DISEGNI FANTASIA



LAMIERE CON FORI A DISEGNI FANTASIA

Vengono prodotte in serie, su lamiere di ferro, alluminio (naturale, anodizzato nei colori oro o bronzo), ottone, rame e di regola negli spessori sottili da mm 0,50 a mm 1,50 salvo casi particolari. Alcuni tipi si possono eseguire anche su masonite, faesite od altri laminati plastici. Sono qui di seguito riprodotti i modelli maggiormente richiesti, in grandezza naturale e contraddistinti da un numero di catalogo.

ORNAMENTAL PERFORATIONS

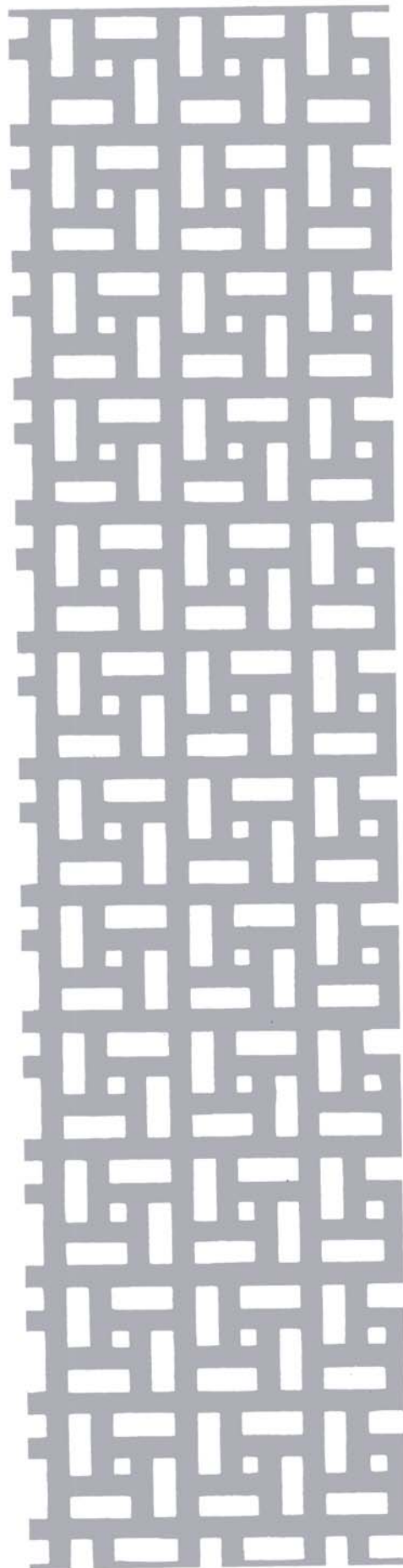
Ornamental perforation is currently done with iron, aluminium (natural or anodized in two different colours: gold and bronze) brass or leather sheets. Standard thickness ranges between 0.50 and 1.50 mm, but exceptions are possible. Certain types of fancy holes may be perforated also into masonite or laminated plastic sheets. The following pictures show the types of perforation that are most in demand at present. They are reproduced in full size and marked by their catalogue number.

BLECHE MIT LÖCHERN IN FANTASIE-ZEICHNUNG

Sie werden in Serie hergestellt, in Stahlblech, Aluminium (roh, eloxiert, gold oder bronze), Messing, Kupfer oder in der Regel mit kleinen Stärken von 0.50 mm bis 1.50 mm, ausgenommen Spezialfälle. Einige Typen können auch in Pressspanplatte, Lochplatte oder in laminierten Pressplatte ausgeführt werden. Sie sind hier nachstehend reproduziert in den gefragtesten Modellen, in Naturgröße und gekennzeichnet durch eine Katalognummer.

TOLES AVEC PERCAGES A DESSINS-FANTASIE

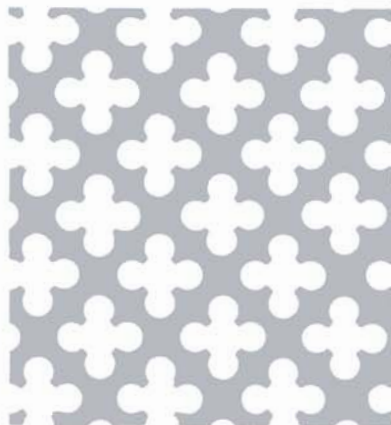
Ils sont produits en série, sur tôles en fer, aluminium (naturel, anodisé dans les couleurs or et bronze), laiton, cuivre et de règle dans les épaisseurs minces de 0,50 à 1,50 mm, sauf cas particuliers. Certains types peuvent être effectués aussi en masonite, faésite ou autres laminés plastiques. Ci-dessous sont reproduits les modèles les plus demandés, en grandeur naturelle et contremarqués par un numéro de catalogue.



FANTASIA ORNAMENTAL ZIER DECORATIVE N.	SPESSORE THICKNESS BLECHSTARKE EPAISSEUR					
	mm					
	0,5	0,8	1	1,2	1,5	2
4	▲	▲				
8	▲	▲				
9	▲	▲	▲	▲		
10	▲	▲	▲	▲	▲	
11			□	□	□	□
12		□	□	□	□	□
13	▲	▲	▲	□		
14	▲	▲	▲	▲	▲	▲
15	▲	▲	▲	▲	▲	▲
16	▲	▲	▲	▲	▲	▲
18			□	□	□	□
19	▲	▲	▲	▲	▲	□
20		□	□	□	□	
22			□	▲	▲	▲
23	▲	▲	▲	▲	□	
24		□	□	□	□	
26			□	▲	▲	▲
28	▲	▲	▲	▲	□	
30	▲	▲	□			
32	▲	▲	▲	▲	□	
34	▲	▲	□			
38				▲	▲	▲
39	▲	▲	▲	▲		
40	▲	▲	□	▲	▲	
41	▲	▲	▲			
42	▲	▲	▲			
43	▲	▲	▲			
44	▲	▲	▲	□		
46	▲	▲	▲	▲		
50	▲	▲	▲	▲	▲	



N. 4



N. 9



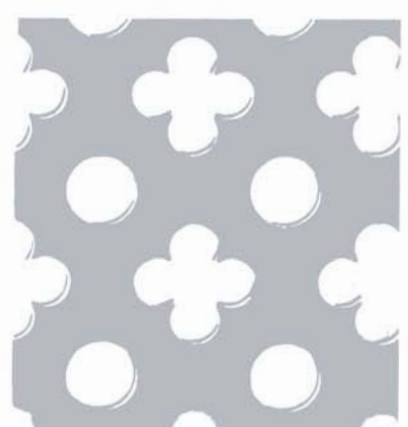
N. 11



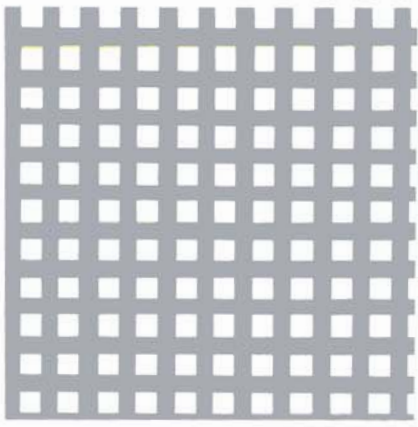
N. 8



N. 10



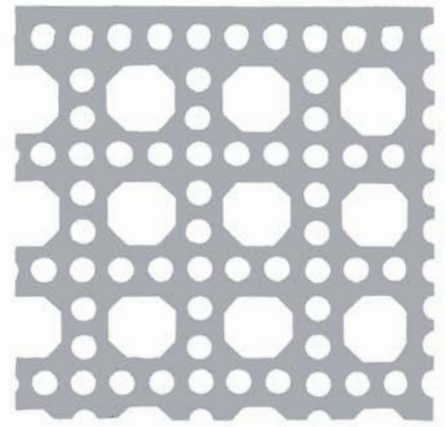
N. 12



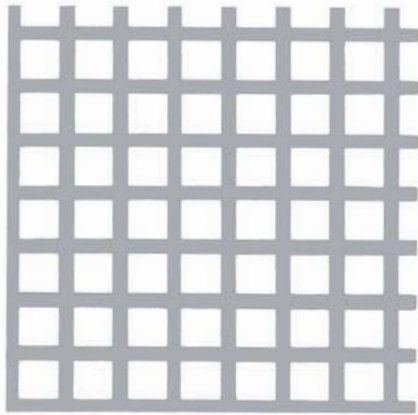
N. 13



N. 18



N. 23



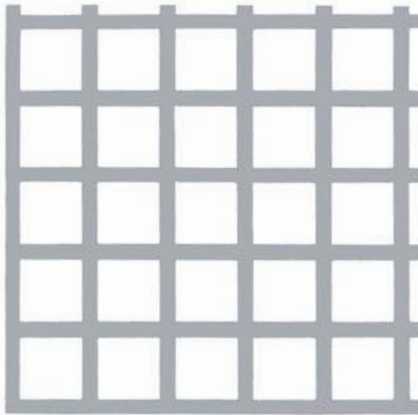
N. 14



N. 19



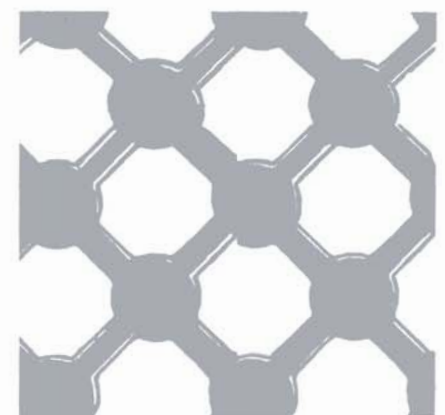
N. 24



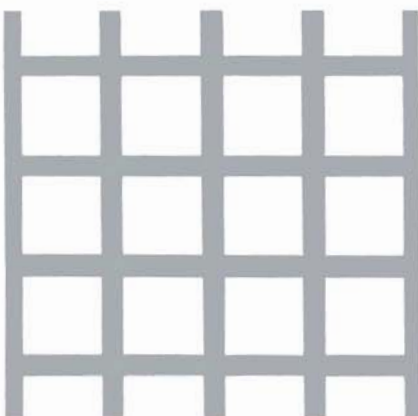
N. 15



N. 20



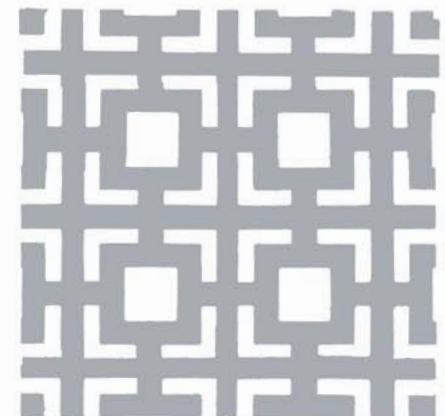
N. 26



N. 16



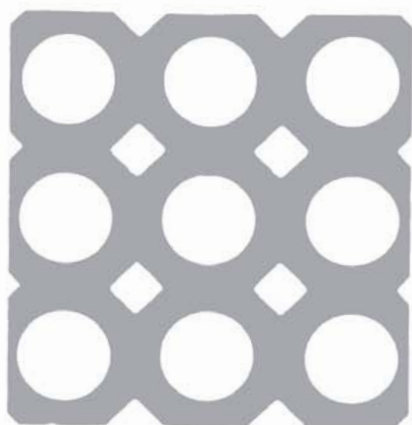
N. 22



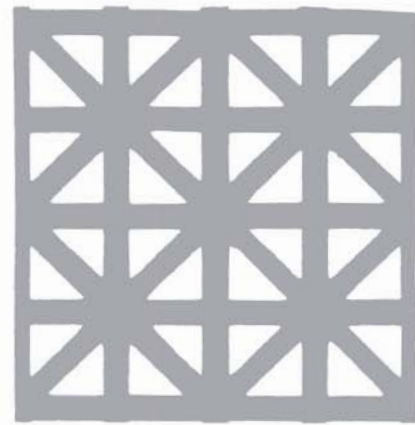
N. 28



N. 30



N. 39



N. 43



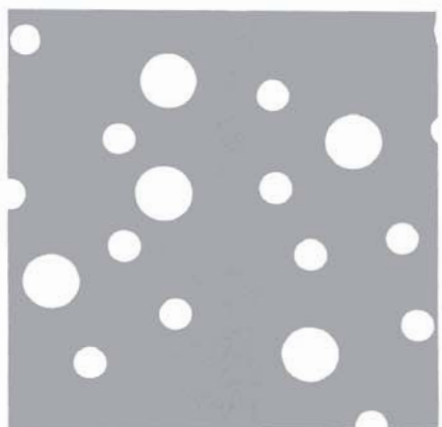
N. 32



N. 40



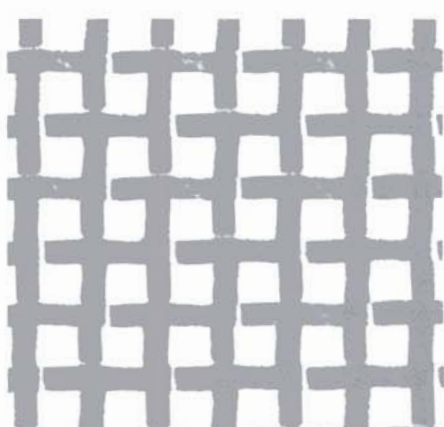
N. 44 (imbutito)



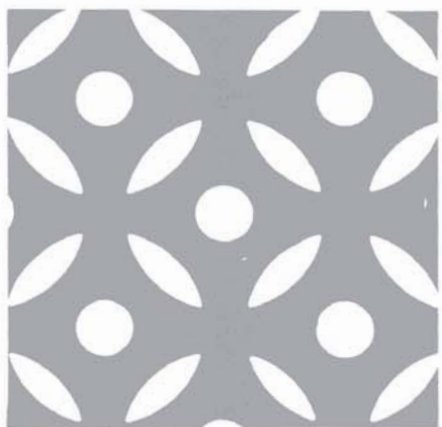
N. 34



N. 41



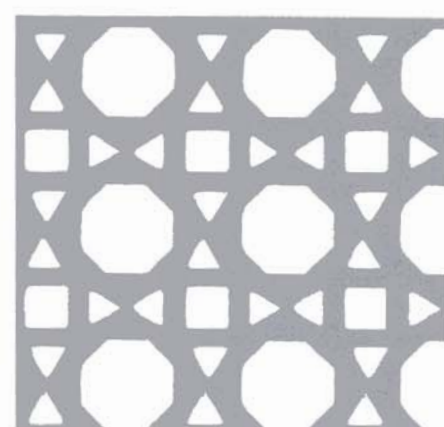
N. 46 (imbutito)



N. 38



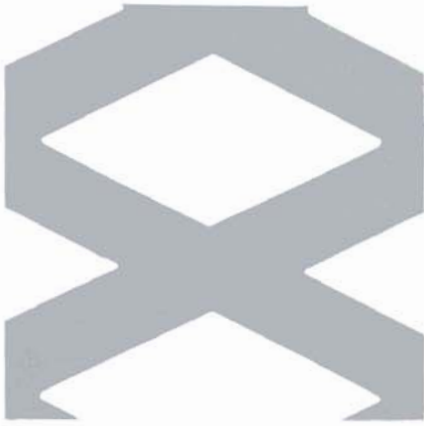
N. 42



N. 50

LAMIERE CON FORATURE VARIE (a richiesta)
PLATES WITH VARIOUS PERFORATIONS (on request)
LOCHBLECHE MIT VERSCHIEDENEN LÖCHERN
TOLES AVEC DIFFERENTES PERFORATIONS

FORI A LOSANGA
DIAMOND
RAUTENLOCHUNG
TROUS A LOSANGE



FORI ESAGONALI
(A NIDO D'APE)

Sono disposti quasi sempre a quinconce.

HEXAGONAL HOLES
(HONEYCOMB)

Almost always side staggered arranged.

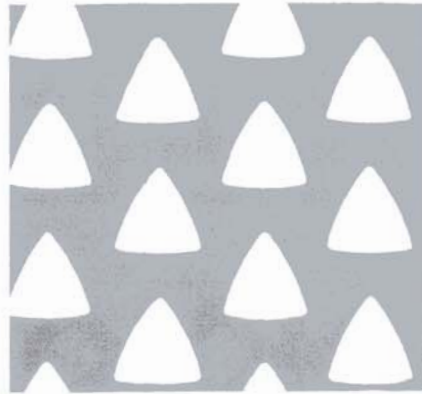
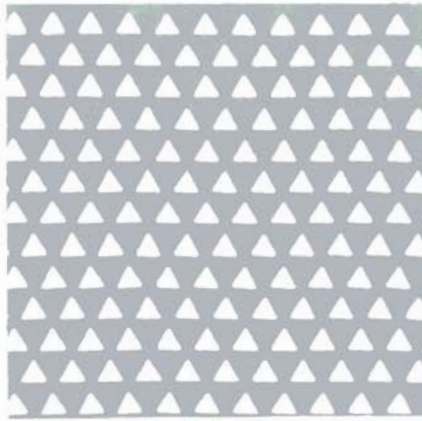
SECHSKANTLOCHUNG
(WABENFÖRMIG)

Sie sind fast immer in versetzten Reihen disponiert.

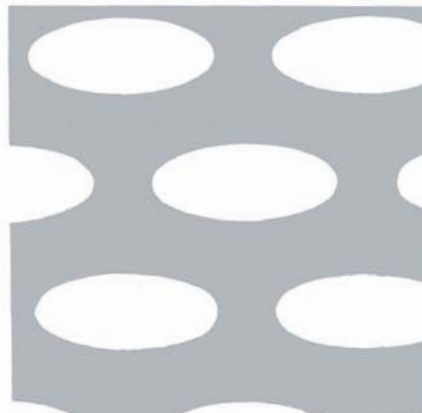
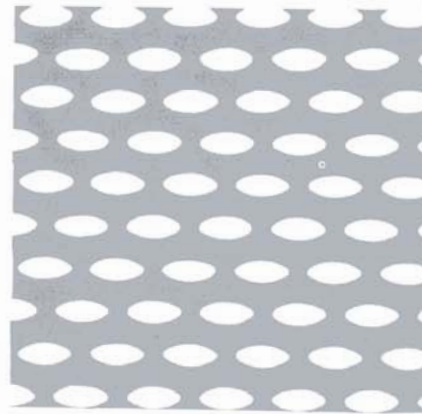
TROUS HEXAGONAUX
(A NID D'ABEILLE)

Ils sont disposées presque toujours en quinconce.

FORI TRIANGOLARI
TRIANGULAR HOLES
DREIECKLOCHUNG
TROUS TRIANGULAIRES



FORI OVALI
OVAL HOLES
OVALLOCHUNG
TROUS OVALES



FORI OBLUNGHICI DISPOSTI IN DIAGONALE, OD A LISCA DI PESCE

Trovano applicazione, nei loro spessori grossi, su vagli destinati all'industria mineraria ed estrattiva in generale. Nei loro spessori sottili sono talvolta richiesti per separatori di polveri, grani, liquidi, nell'industria chimica, dei mulini, del caffè, ecc.

DIAGONALLY OR HERRINGBONE ARRANGED OBLONG HOLES

When perforated through thick metal plates, are used for screens in the mining industry. When made in thin plates, they are sometimes used for dust catchers or traps required by chemical, milling, coffee industries.

LÄNGLICHE LÖCHER IN DIAGONALER DISPOSITION ODER IN FISCHGRÄTENFORM

Sie finden Anwendung, in grosser Stärke, bei Sieben, die für die minerarische Extraktions-Industrie generell bestimmt ist. In ihren dünnen Stärken sind sie sehr gefragt für Scheider von Pulver, Korn, Flüssigkeiten in der chemischen Industrie, von Mühlen, von Kaffee.

TROUS OBLONGS DISPOSES EN DIAGONALES OU EN ARETE DE POISSON

Ils trouvent application, dans leurs grosses épaisseurs, sur des cribles destinés à l'industrie minière et extractive en général. Dans leurs épaisseurs minces ils sont parfois demandés pour séparateurs de poudres, grains, liquides, dans l'industrie chimique, du broyage et de la tonéfaction.

